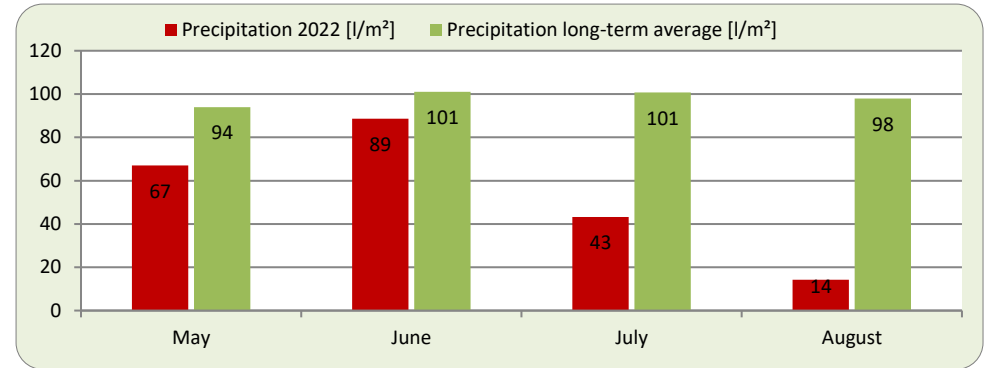
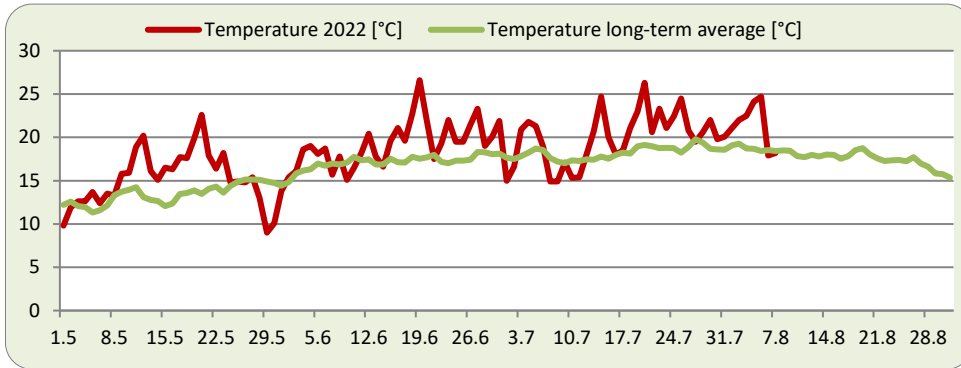


Report on Weather and Hop Growing Conditions: Week 31

Report Period: August 1, 2022 - August 7, 2022

HALLERTAU

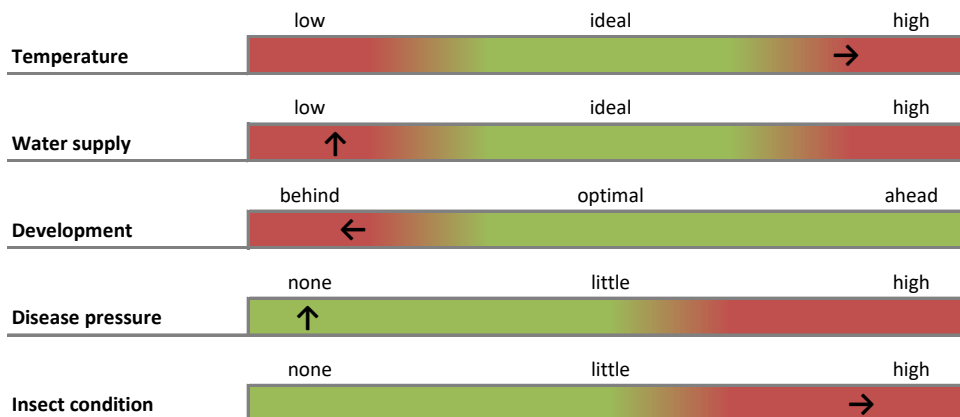


Variety	Comment	Development
Tradition	Cone set / start of lupulin formation	--/
Perle	Cone set / start of lupulin formation	--/
Magnum	Cone set / start of lupulin formation	--/
Herkules	Cone set / start of lupulin formation	--/0

Comments: After another hot week, temperatures only dropped down at the weekend with local precipitation. Therefore, there were hardly any changes of the growth status. On many fields, the plants are waiting for urgently needed precipitation to favor cone setting and lupulin formation. Further spider mite treatments were applied.



(++ very good; + good; o average; - weak; -- very weak)

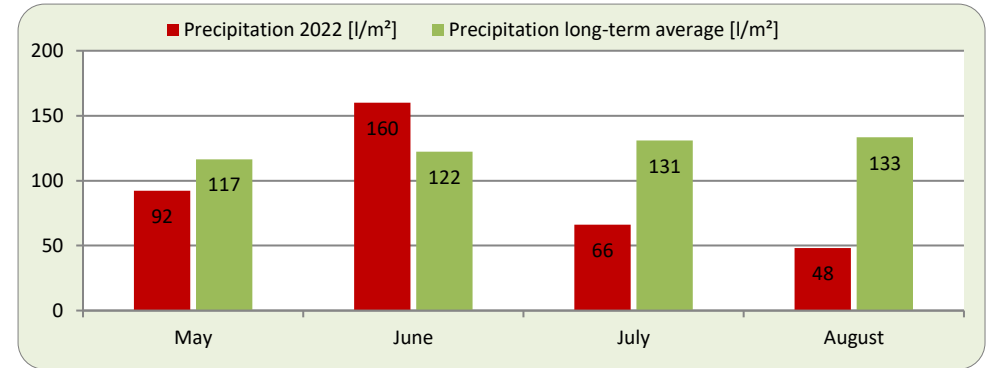
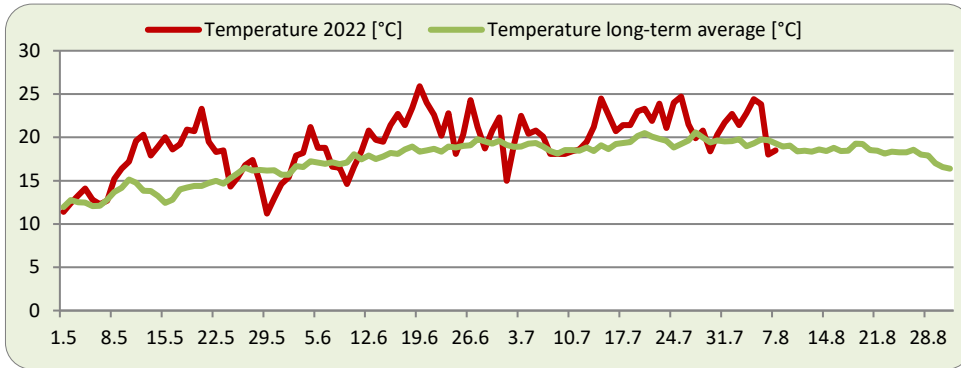


(Tendency: stable ↑, decreasing ←, increasing →)

Report on Weather and Hop Growing Conditions: Week 31

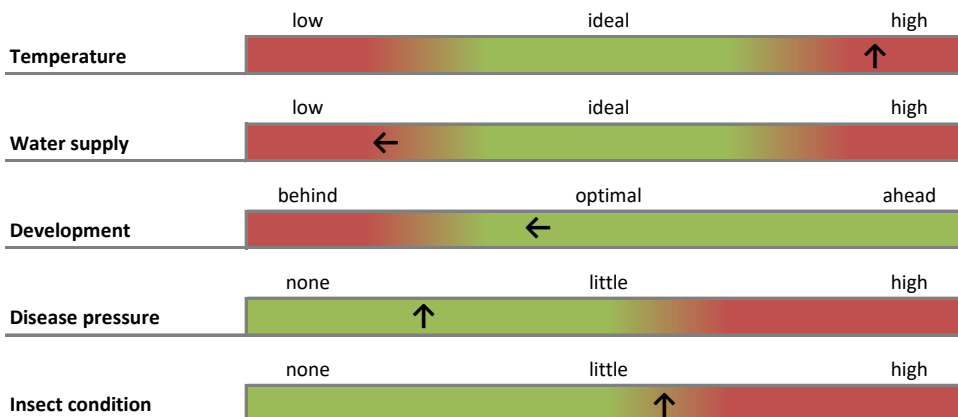
Report Period: August 1, 2022 - August 7, 2022

TETTANANG



Variety	Comment	Development
Tettninger	Cone set / start of lupulin formation	-
Mittelfrüher	Cone set / start of lupulin formation	-
Tradition	Cone set / start of lupulin formation	o
Herkules	Cone set / start of lupulin formation	o

(++ very good; + good; o average; - weak; -- very weak)



(Tendency: stable ↑, decreasing ←, increasing →)

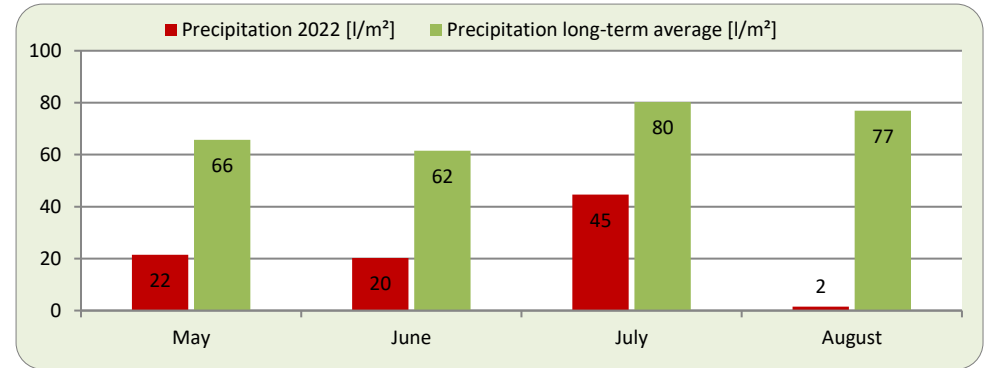
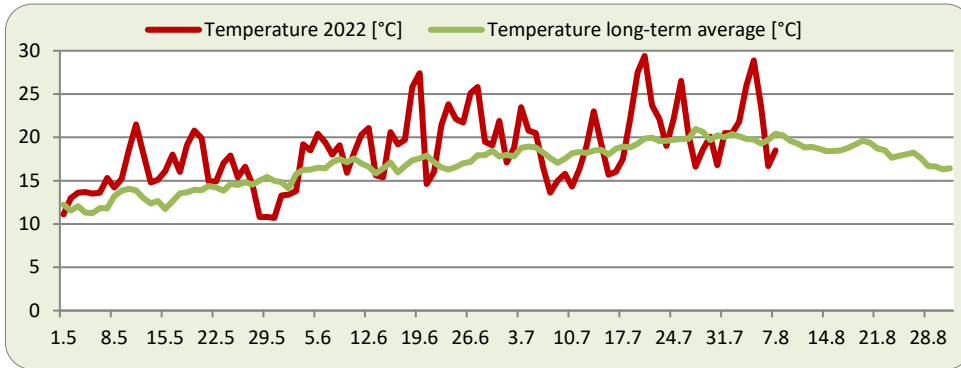
Comments: Thundershowers at the end of the week improved the water supply of the soils a little. The hops are still in the process of developing cones. Pest pressure from the red spider mite is currently under control. Preventive control measures against powdery mildew are being carried out.



Report on Weather and Hop Growing Conditions: Week 31

Report Period: August 1, 2022 - August 7, 2022

ELBE SAALE

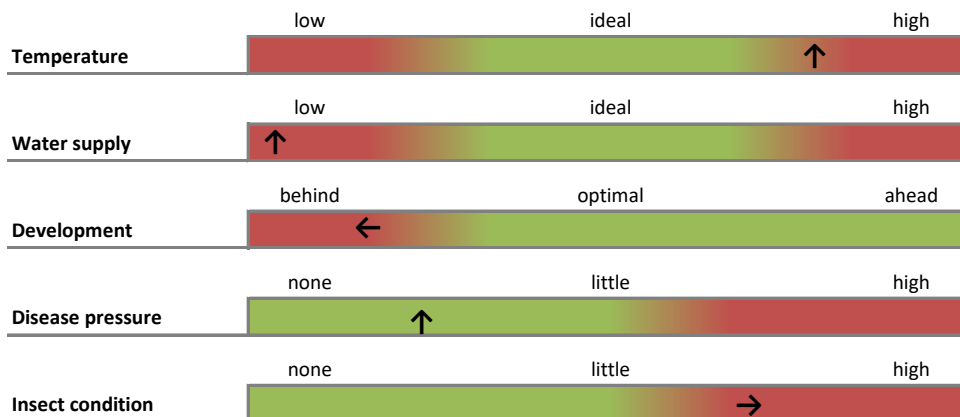


Variety	Comment	Development
Perle	Cone set / start of lupulin formation	- -/
Northern Brewer	Cone set / start of lupulin formation	- -/
Magnum	Cone set / start of lupulin formation	-
Herkules	Cone set / start of lupulin formation	-/o

Comments: The week was divided into two parts in terms of temperature. At the beginning of the week, temperatures were at a high of 28°C, from midweek it cooled down to about 16°C. All varieties are in the growth stage of cone setting. Fungal diseases are under control. Problems are caused by the red spider mite, which multiplies very quickly due to the dry, warm weather.



(++ very good; + good; o average; - weak; -- very weak)



(Tendency: stable ↑, decreasing ←, increasing →)